

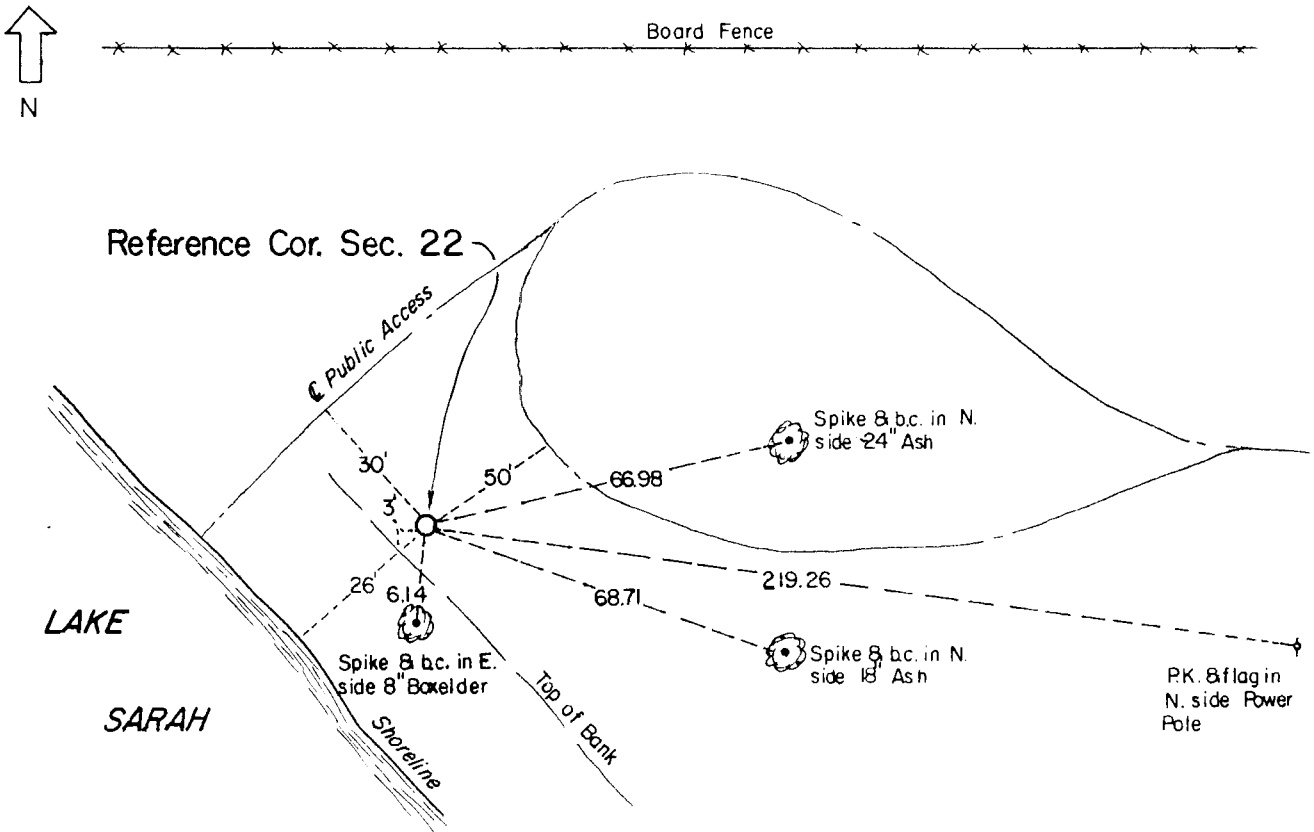
# CERTIFICATE OF LOCATION OF GOVERNMENT CORNER

**Reference (North Line)** Corner of Section **22** , Township **108** , Range **41** , 5th P.M.

STATE OF MINNESOTA, County of Murray.

**Statement:** Oct. 30, 1989 - Placed Minnesota Department of Transportation  
Cast Iron Monument.

### SKETCH OF REFERENCE TIES



Statement of evidence relative to this corner location is on the back of page.

I hereby certify that this document and the data contained herein was prepared by me or under my direct supervision and that I am a duly Registered Land Surveyor under the laws of the State of Minnesota.

*Duane A. Bonnema*  
Duane A. Bonnema

*Nov 21, 1989*  
Date

Minnesota Registration No. 14895

OFFICE OF THE COUNTY RECORDER  
COUNTY OF MURRAY

**MAR 1 1 1991**

I hereby certify that this document was filed in the County Recorder's office at \_\_\_\_ M. on the \_\_\_\_ day of \_\_\_\_ A.D., 19\_\_

County Recorder *James V. Johnson*

By \_\_\_\_\_, Deputy

DOCUMENT NO. \_\_\_\_\_

Reference (North Line) Cor. Sec. 22 T108N-R41W

Statement:

Oct. 1989

*Duane A. Bonnema, LS Reg. No. 14895, placed a cast iron monument reference corner on the North line of Section 22 at the East shore of Lake Sarah. This corner was placed after searching for the original meander corner. The corner position was determined by retracement of plats in the immediate area. For more information regarding this corner, contact:*

*Duane Bonnema  
P.O. Box 298  
Prinsburg, Minnesota 56201*